

WESTMARK

Whitehorse Hotel & Conference Center

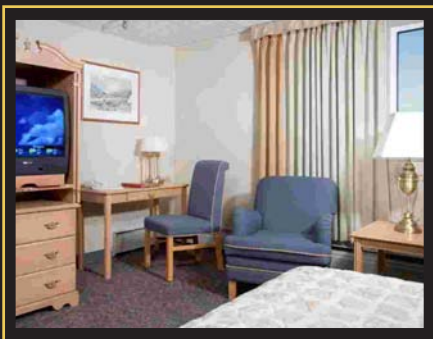
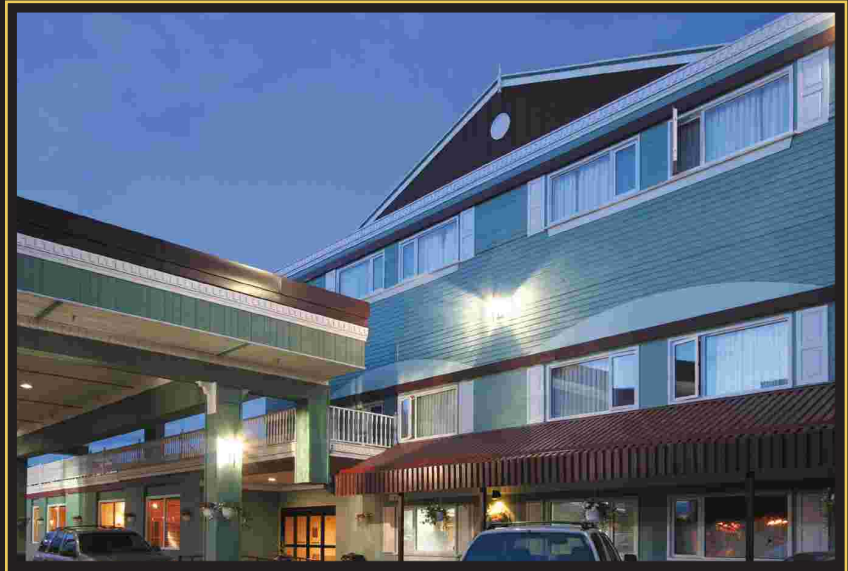


Located in the heart of downtown, the Westmark Whitehorse is the largest hotel in the Yukon and features 7,000 total square feet of convention meeting space.

The Westmark Whitehorse has 180 first-class guest rooms and suites, professional conference facilities and catering staff dedicated to making your next meeting a memorable event.

The newly remodeled Ballroom features 4,200 square feet of meeting space and can be subdivided into two or three smaller rooms. Four smaller meeting rooms are also available in various configurations for groups of up to 64 people.

We look forward to providing the finest service that is in keeping with the Westmark Hotels tradition of excellence.



AMENITIES

180 Rooms and Suites

•
Steele Street
Restaurant & Lounge

•
Northern Wonders™
Gift Shop

•
Suites with Jetted Tubs

Fitness Center

•
Meeting and Banquet Facilities

•
Corporate and
Government Rates

•
Special Meeting and
Conference Rates

Westmark Whitehorse Hotel & Conference Center
201 Wood Street
Whitehorse, Yukon Canada Y1A 2E4

Hotel Telephone: 867-393-9700
Hotel Fax: 867-668-2789
Front Office: 867-393-9717

Regional Sales Office: 800-283-6622
Catering Office: 867-393-9701
Catering Fax: 867-668-2789

Central Reservations:
www.westmarkhotels.com
800-544-0970

Westmark Whitehorse Hotel & Conference Center

CONFERENCE ROOM ONE, TWO AND THREE COMBINED

SIZE:	CAPACITIES:					
DIMENSIONS	SQUARE FEET	1/2 ROUNDS	CONFERENCE	U-SHAPE	RECEPTION	BANQUET
84 x 50	4,200	228	N/A	70	345	300

CONFERENCE ROOM ONE

SIZE:	CAPACITIES:					
DIMENSIONS	SQUARE FEET	1/2 ROUNDS	CONFERENCE	U-SHAPE	RECEPTION	BANQUET
36 x 50	1,800	60	N/A	40	150	96

CONFERENCE ROOM TWO

SIZE:	CAPACITIES:					
DIMENSIONS	SQUARE FEET	1/2 ROUNDS	CONFERENCE	U-SHAPE	RECEPTION	BANQUET
25 x 50	1,250	42	40	30	104	64

CONFERENCE ROOM THREE

SIZE:	CAPACITIES:					
DIMENSIONS	SQUARE FEET	1/2 ROUNDS	CONFERENCE	U-SHAPE	RECEPTION	BANQUET
22 x 50	1,100	36	32	30	90	56

CONFERENCE ROOM FOUR

SIZE:	CAPACITIES:					
DIMENSIONS	SQUARE FEET	1/2 ROUNDS	CONFERENCE	U-SHAPE	RECEPTION	BANQUET
44 x 23	1,012	36	32	30	76	64

CONFERENCE ROOM FIVE

SIZE:	CAPACITIES:					
DIMENSIONS	SQUARE FEET	1/2 ROUNDS	CONFERENCE	U-SHAPE	RECEPTION	BANQUET
45 x 23	1,035	42	32	30	80	64

CANYON CITY ROOM

SIZE:	CAPACITIES:					
DIMENSIONS	SQUARE FEET	1/2 ROUNDS	CONFERENCE	U-SHAPE	RECEPTION	BANQUET
9.5 x 20	190	N/A	8	N/A	N/A	8

TAGISH POST ROOM

SIZE:	CAPACITIES:					
DIMENSIONS	SQUARE FEET	1/2 ROUNDS	CONFERENCE	U-SHAPE	RECEPTION	BANQUET
17 x 28	476	N/A	24	N/A	32	25

BENNETT POST ROOM

SIZE:	CAPACITIES:					
DIMENSIONS	SQUARE FEET	1/2 ROUNDS	CONFERENCE	U-SHAPE	RECEPTION	BANQUET
17 x 33	561	N/A	24	N/A	40	32

